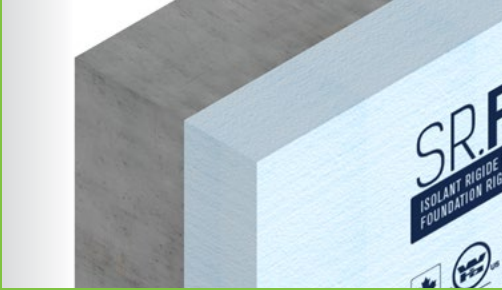




THE MOST COMFORTABLE SYSTEM

SAY GOODBYE TO CONDENSATION



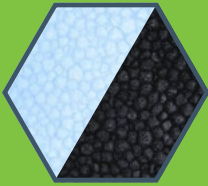
SAY HELLO TO HEAT



Perfect fusion between concrete and insulation. No air space for condensation. Dry basement.



100% continuous insulation between the foundation wall and the slab. No thermal break.



**TYPE 2 EXPANDED POLYSTYRENE**  
SR.F200™: Regular insulation or SR.F200G™: For a higher R-value with Neopor® Graphite beads.



**PLASTIC CLIP**  
Fastening points for the installation of any type of siding. Clip is solidly anchored to the concrete.



**GROOVE FOR STEEL ROD**  
Panel and clip designed for the rods installation.



**CHANNEL**  
For the drainage of water in case of unexpected infiltrations.



**High-Performance Insulation**  
INSULATING PANEL INSERTED INTO TRADITIONAL FORMWORK

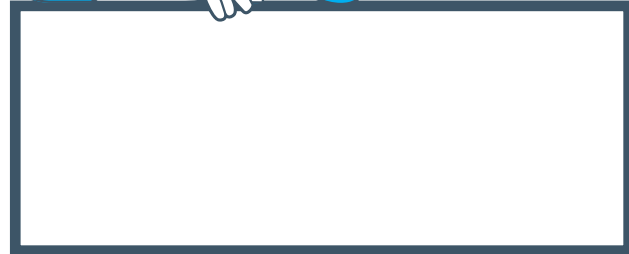


SR.F200™

RIGID EXPANDED POLYSTYRENE FOR CONCRETE FORMWORK



Be clever and insulate with **Bluefox™**



Developed by builders, for builders!



CUSTOMER SERVICE AND TECHNICAL SUPPORT

1 888 332-3456  
info@styrorail.ca  
styrorail.ca

65 RTE 105  
La Pêche | QC  
J0X 3G0 | CANADA



EXPAND YOUR WORLD  
STYRORAIL.CA



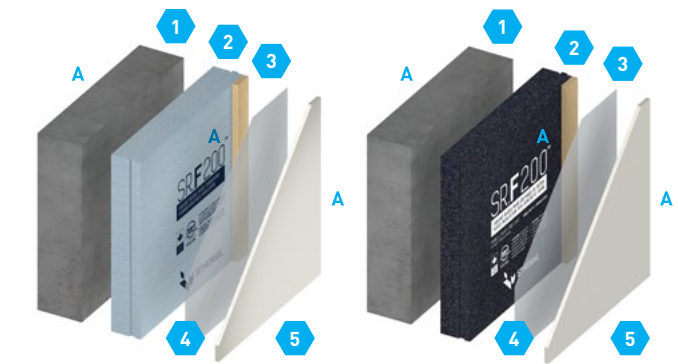
Make your basement comfortable. And use it!



**WHAT IS AN EFFECTIVE R VALUE?**

**Answer:** The sum of all layers of materials and air cavities.

- 1. 8" Foundation/Concrete Wall
- 2. SR.F200™ Panel
- 3. 1"x3" Furring Strips
- 4. Vapour Barrier
- 5. ½" Gypsum Panel
- A. Air Films and Air Cavity



**PHYSICAL PROPERTIES**

SR.F200™	R VALUE						EFFECTIVE R VALUE
	EXTERIOR AIR FILM	8" CONCRETE WALL	STYORAIL™ INSULATION	¾" AIR SPACE	GYPSON	INTERIOR AIR FILM	
4" Regular	0.17	0.46	16.00	1.02	0.45	0.68	18
4" Neopor®	0.17	0.46	19.00	1.02	0.45	0.68	21

Neopor® Trade Mark of BASF

**AVAILABLE FORMATS**

The SR.F200™ panels are manufactured in multiple formats.

**Widths**  
24", 16", 12", 8", 7" 6", 4", 3", 2"

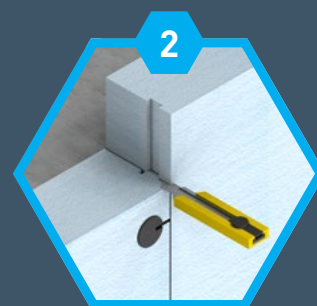
**Heights**  
4', 5', 5'-6", 6', 8', 8'-6", 9', 10'

**CERTIFICATIONS**

**CAN/ULC-S701-11**  
**CCMC 13271-L**  
Can contribute to LEED credits.  
Patented Product



**PANEL INSTALLATION**  
Inside the traditional wood formworks. Before the concrete casting.



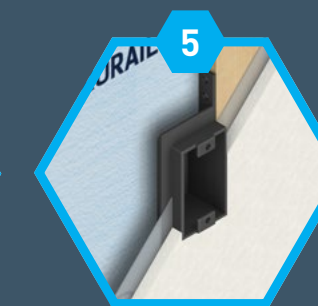
**STRIPPING**  
Cut off the excess insulation.



**SEALING THE OPENINGS**  
Use a compatible adhesive such as Lepage PL®300.



**SIMPLIFIED INTERIOR FINISH / INSTALLING 1"x3" FURRING STRIPS**  
Through plastic anchors with #8 wood screws of min. 1-¼".



**ELECTRICAL BOX**  
Install the box in the insulation. Attach it to the furring strip.



**OPENINGS AND CORNERS**  
Install furring strips at corners and around the windows for a solid nailing backing.



**VAPOR BARRIER AND GYPSUM INSTALLATION**  
As per the current construction codes.



**VERSATILE**  
Indoor or outdoor application.



Refer to the Installation Guide for more information.