

SR.PIPE™

EXPANDED POLYSTYRENE RIGID INSULATION FOR UNDERGROUND PIPING

The SR.Pipe™ blocks manufactured by Styro Rail Inc. are composed of type 2 or type 3 expanded polystyrene [EPS] rigid insulation.



CHARACTERISTICS

SUITABLE FOR VARIOUS TYPES OF PIPING
FROM 38 MM [1-1/2"] TO 102 MM [4"]

HIGH COMPRESSIVE STRENGTH UP TO 276 kPa [40 PSI]

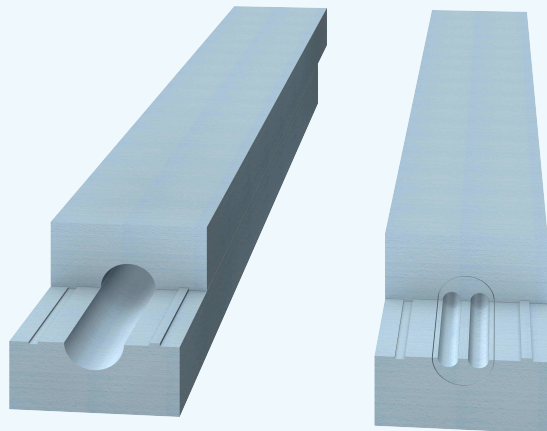
INERT MATERIAL - NOT-AFFECTED BY SOIL OR
GROUNDWATER

LOW WATER ABSORPTION - FREEZE | THAW RESISTANT

PERMANENT R-VALUE - DOES NOT DIMINISH WITH TIME

100% RECYCLABLE MATERIAL

MEETS CAN/ULC-S701.1 STANDARD



SR.PIPE™ | **EXPANDED POLYSTYRENE RIGID INSULATION FOR UNDERGROUND PIPING**

AVAILABLE DIMENSIONS

		200	300	350	400
305 mm x 305 mm x 2438 mm	[12" x 12" x 96"]	R16.0*	R16.8	R17.2	R17.2

Other dimensions available upon request.

* In stock

RECOMMENDED USE

Install **SR.Pipe™** blocks as a protective material to reduce the risk of freezing for piping below the ground level. Use for water pipes, water drainage pipe systems and for flat roofs drainage pipes. The 200 series is ideal for installation under loose soil and under residential garage concrete slabs. Use the 300 and 400 series for installation under commercial, industrial and agricultural garage concrete slabs as well as under the footings, road infrastructure concrete pavement and parking lots. Includes two [2] grooves suitable for two [2] pipes up to 38 mm [1-1/2"] in diameter. Removable central part to accommodate one [1] pipe up to 102 mm [4"] in diameter.

CERTIFICATION

Warnock Hersey has certified the type 2 and type 3 expanded polystyrene contained in **SR.Pipe™** blocks in accordance with the CAN/ULC-S701.1 standard. The type 2 and type 3 expanded polystyrene produced by **STYRORAIL™** is listed in the CCMC Registry of Product Evaluation under CCMC 13271-L and CCMC 13277-L.

ENVIRONMENTAL DATA

The expanded polystyrene used in the making of the **SR.Pipe™** blocks are composed of 98% air and 2% plastic material. They are manufactured without HCFC, HFC gases and without HBCD flame retardant.

STORAGE AND COVERING

Store and install blocks in a location protected from ultraviolet rays, open flames or other sources of ignition. Blocks must be in good condition before installation.

In order to limit the color loss from extended periods of UV exposure, cover the blocks at the earliest opportunity with a tarpaulin, film or a material protecting from ultraviolet rays.

LIMITATIONS

Expanded polystyrene is combustible. Even if expanded polystyrene contains a flame retardant, limit use of open flame or ignition sources near product. A protective barrier or thermal barrier is required as specified in the appropriate building code.

Expanded polystyrene may be affected by some oil based solvents.

EXEMPTION OF LIABILITY

The information herein is based on the present state of our best scientific and practical knowledge. The user is responsible for checking the suitability of products for their intended use. **STYRORAIL™** technical data sheets are updated on a regular basis; it is the user's responsibility to obtain and to confirm the most recent version. Information contained in this data sheet may change without notice.

SR.PIPE™ **EXPANDED POLYSTYRENE RIGID INSULATION FOR UNDERGROUND PIPING**

PHYSICAL PROPERTIES

SR.PIPE™	200	300	350	400
Type	2	3	3	3
Thermal Resistance Min. [ASTM C518] Thickness of 25 mm [1"]	RSI 0,70 [R4.0]	RSI 0,74 [R4.2]	RSI 0,76 [R4.3]	RSI 0,76 [R4.3]
MVTR Max. [ASTM E96]	200 ng/Pa·s·m² [3.5 US Perms]	130 ng/Pa·s·m² [2.27 US Perms]	130 ng/Pa·s·m² [2.27 US Perms]	130 ng/Pa·s·m² [2.27 US Perms]
Compressive Strength Min. [ASTM D1621] 10% Deformation	110 kPa [16 PSI]	140 kPa [20 PSI]	210 kPa [30 PSI]	276 kPa [40 PSI]
Flexural Strength Min. [ASTM C203]	240 kPa [35 PSI]	300 kPa [44 PSI]	345 kPa [50 PSI]	414 kPa [60 PSI]
Water Absorption Max. [ASTM D2842] Volume	3 %	2 %	1.8 %	1.5 %
Dimensional Stability Max. [ASTM D2126] Linear Variation	1.5 %	1.5 %	1.5 %	1.5 %
Limiting Oxygen Index Min. [ASTM D2863]	24 %	24 %	24 %	24 %
Density Min. [ASTM C303]	20 kg/m³ [1.2 lbs/ft ³]	25 kg/m³ [1.5 lbs/ft ³]	29 kg/m³ [1.8 lbs/ft ³]	39 kg/m³ [2.4 lbs/ft ³]
Flame Spread Rating [CAN/ULC S102.2]	145	145	145	145