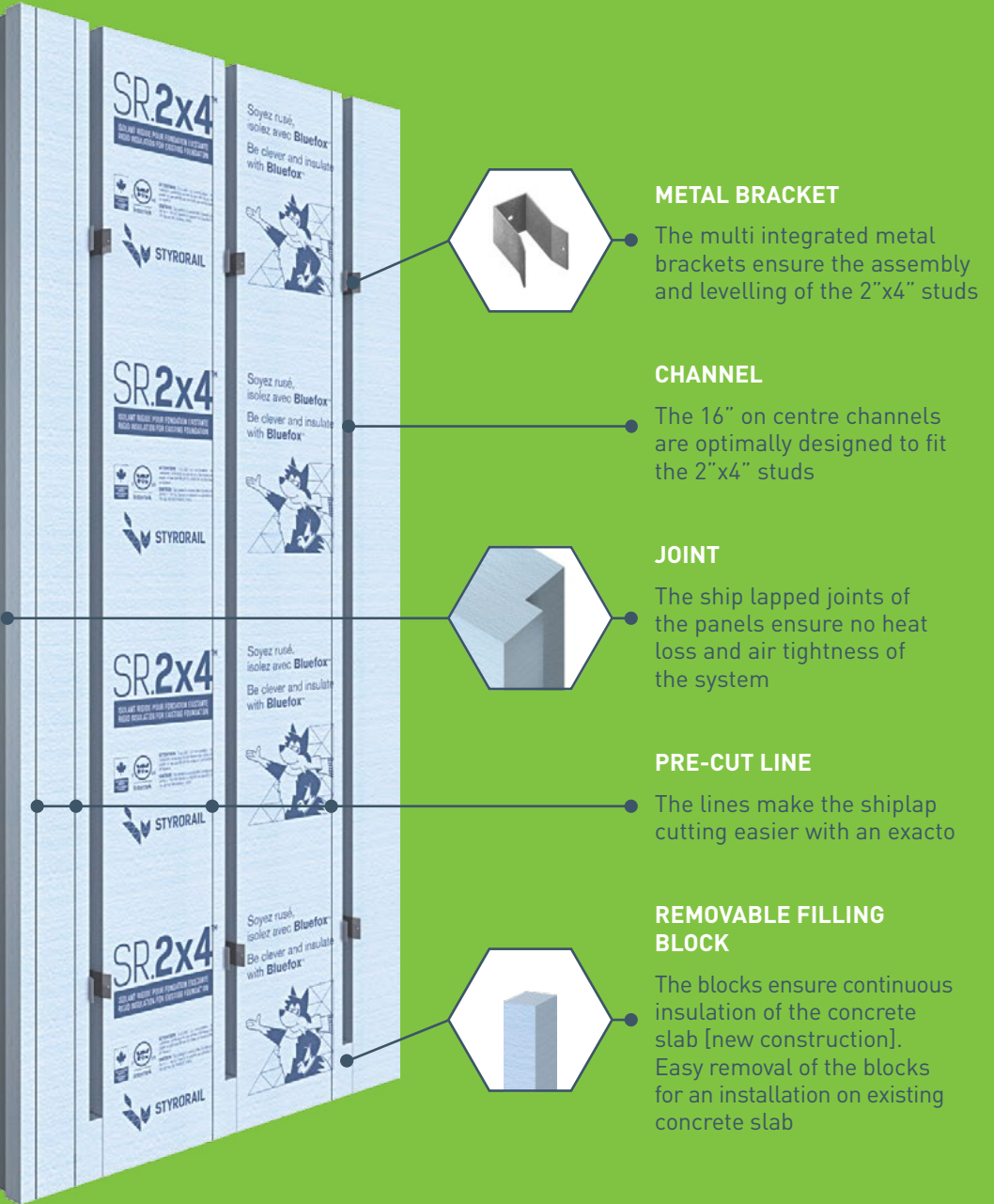


THE MOST COMFORTABLE SYSTEM

The SR.2x4™ insulating system is designed to finish your basement quickly and efficiently. Can be installed by one person, ideal for renovations. Place the panels against the foundation; screw the metal clips, located in the grooves, into the foundation; insert, level and screw the 2"x4" wood studs in the clips. That's all there is to it! Your foundation is insulated and straight.



Save and ensure your comfort!

THE MOST EVOLVED INSULATION SYSTEM FOR FOUNDATIONS IN ITS CLASS



Finally, a high performance system for foundations, fast and easy to install!



COMFORT +
ENERGY
EFFICIENCY

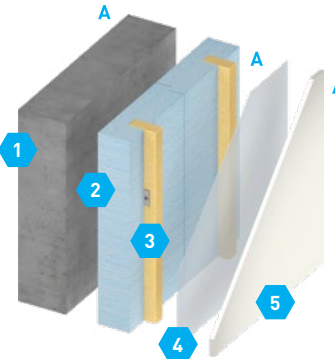
INSULATING
VALUE

* calculated
for a typical
4" section

WHAT IS AN EFFECTIVE R VALUE?

Answer: The sum of all layers of materials and air cavities.

1. 8" Foundation/Concrete Wall
2. SR.2x4™ Panel
3. 2"x4" Wood Studs
4. Vapour Barrier
5. ½" Gypsum Panel
- A. Air Films and Air Cavity



PHYSICAL PROPERTIES

SR.2X4™	EXTERIOR AIR FILM R VALUE	8" CONCRETE WALL R VALUE	STYORAIL™ PANEL R VALUE	2"x4" WOOD STUD R VALUE	1 ½" AIR CAVITY R VALUE	GYP SUM R VALUE	INTERIOR AIR FILM R VALUE	TOTAL EFFECTIVE R VALUE
3" Regular	0.17	0.46	10.64	0.27	0.96	0.45	0.68	14
4" Regular	0.17	0.46	14.34	0.27	0.96	0.45	0.68	17
4" Neopor®*	0.17	0.46	18.21	0.27	0.96	0.45	0.68	21
4 ½" Neopor®*	0.17	0.46	20.56	0.27	0.96	0.45	0.68	23

AVAILABLE SIZES

The **SR.2x4™** panels are offered in a variety of dimensions.

Standard dimensions:
4" x 48"x 96", 48" x 102", 48" x 108"

3" and 4 ½" thicknesses are available on special orders.

Channels at 16" o.c. by default.
Channels at 24" o.c. also available.

CERTIFICATIONS

**CAN/ULC-S701-11
CCMC 13276-L**

Allows for
LEED credits.

*Meets the
NOVOCLIMAT 2.0
certification
program.



1

METAL BRACKETS

Included in each panel and used to fasten the panels to wall.

2

PRE-CUT LINES

Strategically placed, facilitates cutting the panel on site.

3

AIR TIGHT AND STABLE FOR LIFE

Perfect overlap between panels due to shiplapped joints.

4

FASTENING OF THE PANELS

Using the metal brackets and a power-actuated tool, the panel is fastened to the foundation wall.

5

INSERTING THE STUDS

The 2"x4" wood studs are easy to insert into the existing channels.

6

LEVELING THE STUDS

Once leveled, the studs are then attached with wood screws through the metal brackets.

7

EXTERIOR CORNER

Horizontally installed studs are used to finish the exterior corner and provide solid backing.

8

INTERIOR CORNER

The insertion of a stud in the interior corner facilitates the installation of the gypsum and vapour barrier.

9

SIMPLIFIED INSTALLATION

The 1-½" gap eases the installation of electrical boxes and wires.

STUD INSTALLATION AND LEVELING

WOOD FRAME AT CORNERS

ELECTRICITY