

EXTERIOR APPLICATIONS

FLOOR SYSTEM FOR EXTERIOR APPLICATION SUCH AS WOOD OR METAL DECKS MAY USE A SIMILAR ANCHORING SYSTEM TO THOSE SHOWN ON THIS DETAIL SHEET

SIDING – VINYL, WOOD, CEMENT BOARD OR OTHER AS SPECIFIED (ADDITIONAL SUBSTRATES MAY BE REQUIRED)

AIR BARRIER MEMBRANE – OPTIONAL

BUILDBLOCK 6" OR 8" I.C.F. UNITS

FLOOR SYSTEM PER CONSTRUCTION DRAWINGS

FLOOR SYSTEM PER CONSTRUCTION DRAWINGS

CONTINUOUS LEDGER BOARD

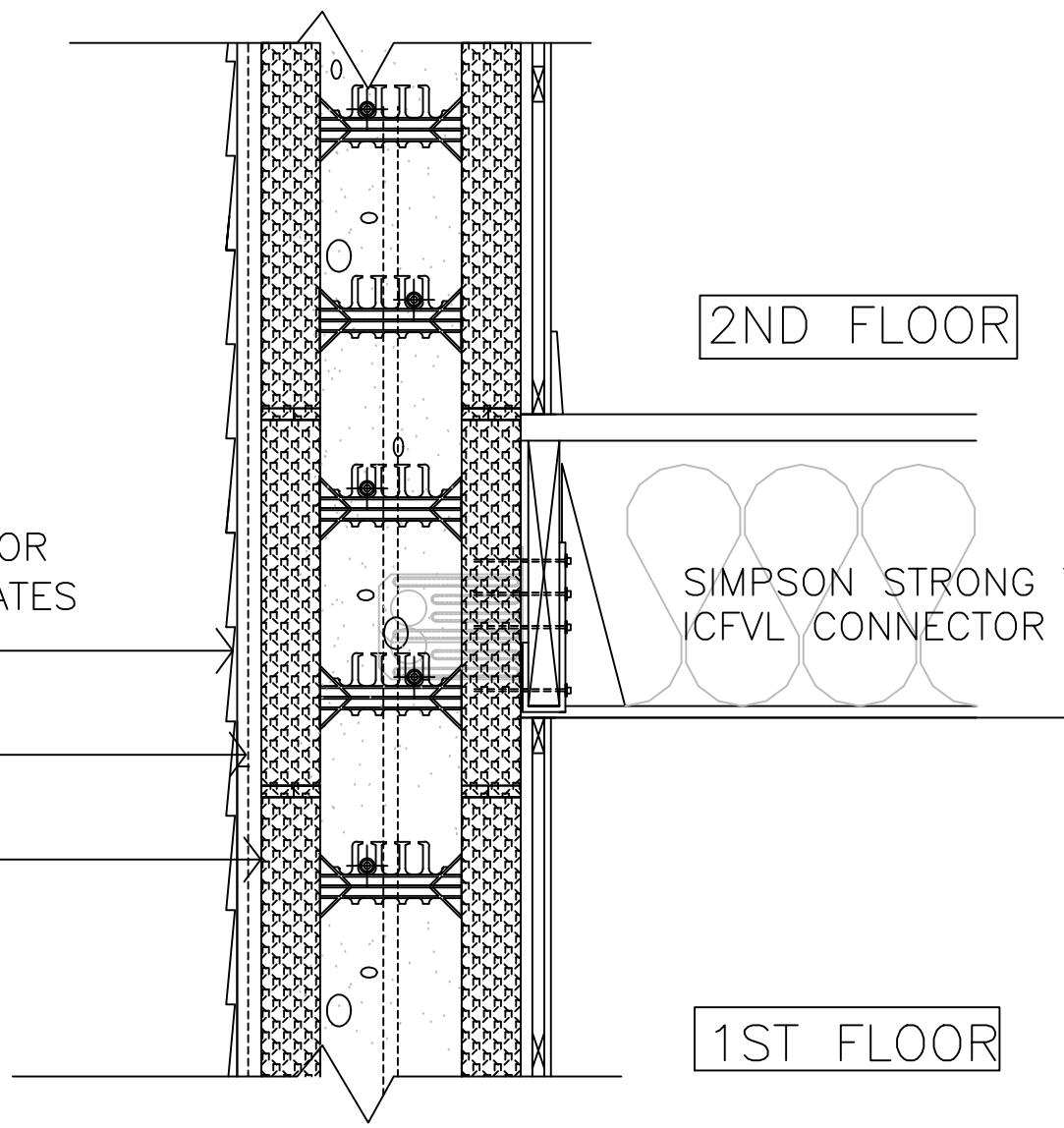
MASONRY VENEER (VERIFY CODE APPROVED GRADE CLEARANCE FOR PROJECT LOCATION)

BUILDBLOCK 6" OR 8" I.C.F. UNITS
GROUT FILL BELOW GRADE

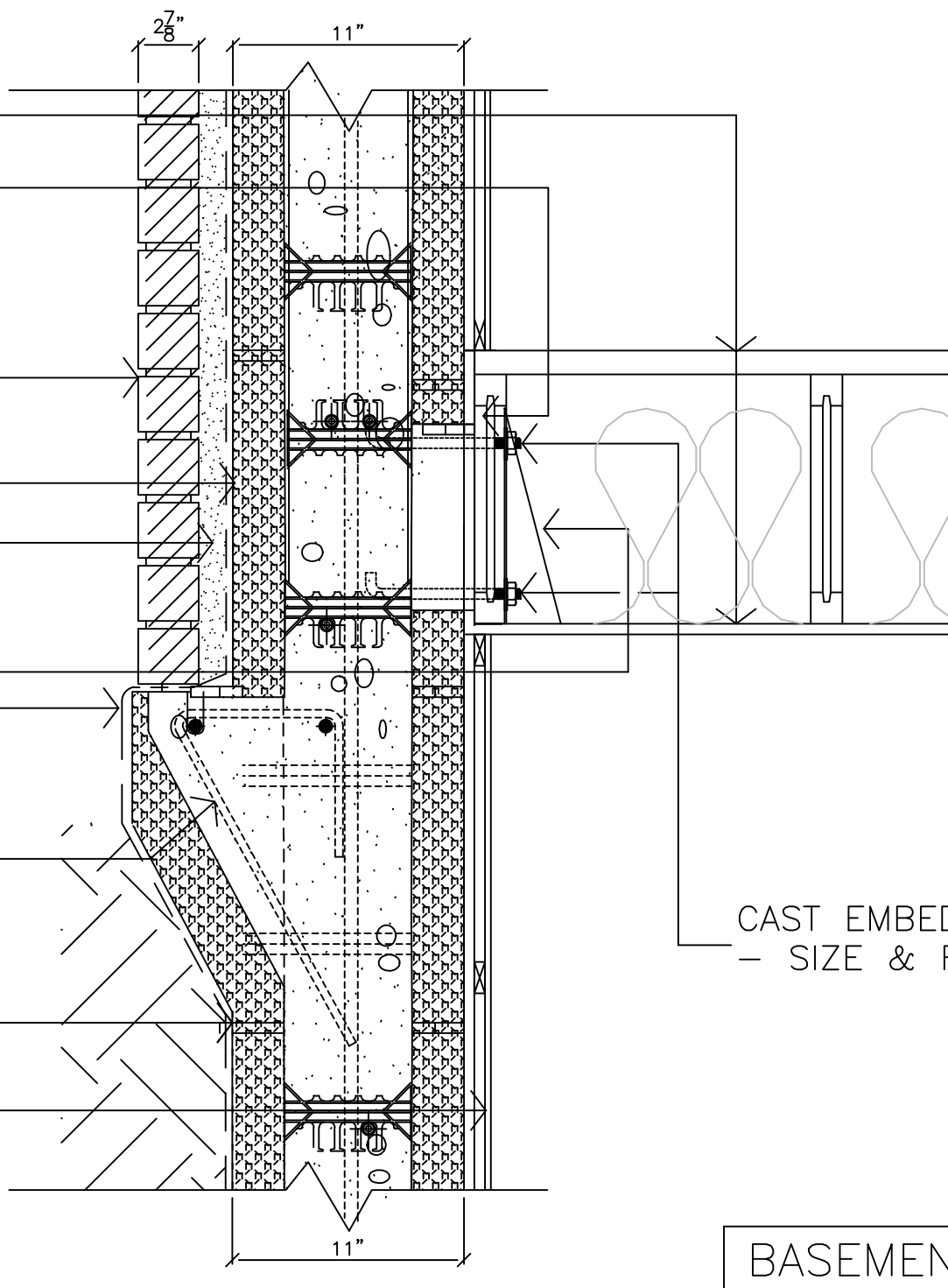
APPROVED JOIST HANGER
APPROVED MEMBRANE WATERPROOFING (ALL SURFACES BELOW GRADE)
REBAR STIRRUPS (SEE DETAIL OR AS ENGINEERED FOR SPECIFIC LOAD)

BUILDBLOCK LEDGE BLOCK

1/2" GYP. BD. MIN.

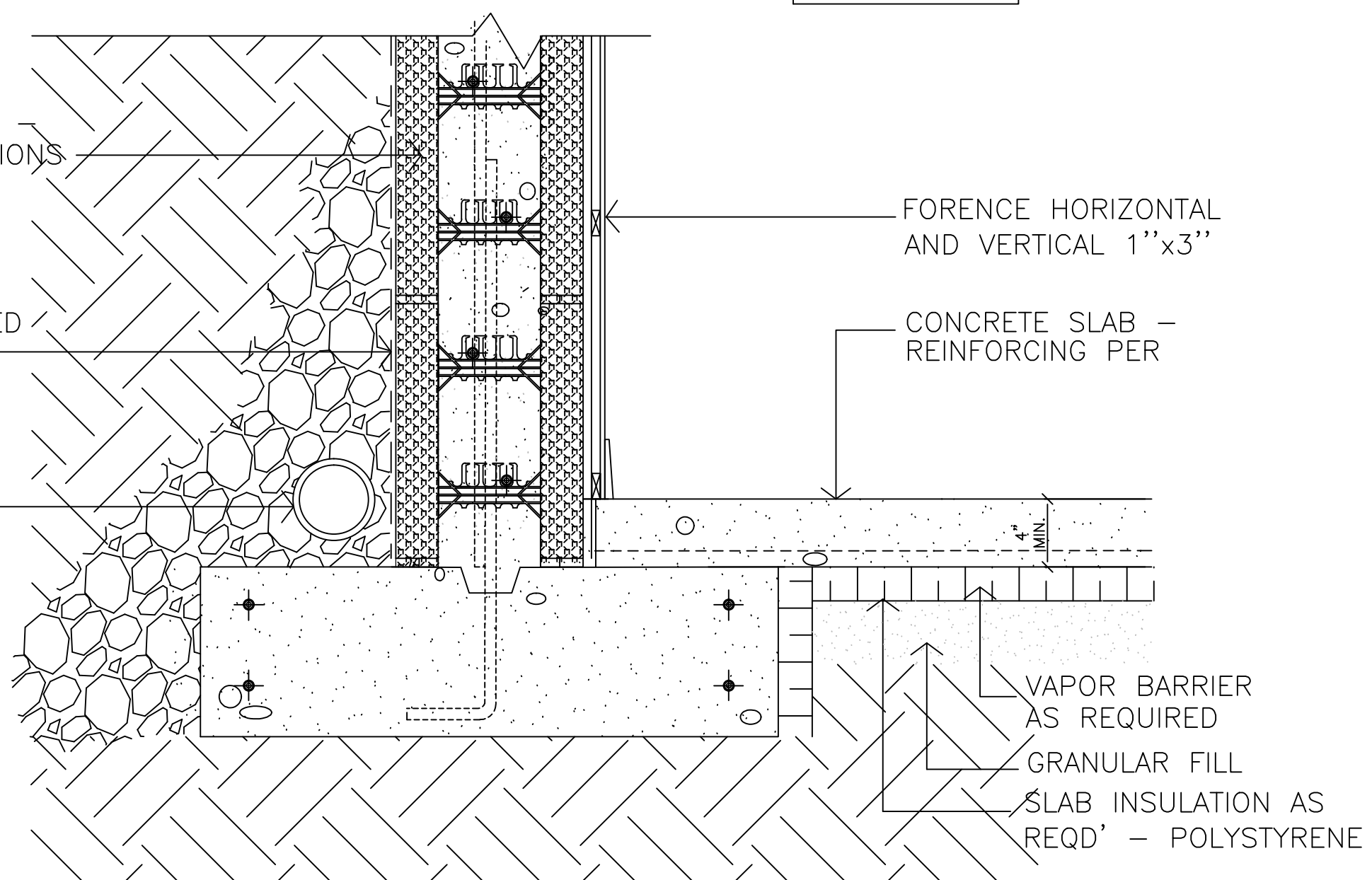


TYPICAL FLOOR INTERSECTION



ALTERNATE FLOOR INTERSECTION

CAST EMBEDDED STEEL ANCHOR BOLTS – SIZE & FREQUENCY PER ENG. SPECS



BUILDBLOCK 6" OR 8" UNITS
REINFORCING PER SPECIFICATIONS

SOLVENT FREE AUTO-STICK
MEMBRANE WATER PROOFING
AND/OR RIGID HONEYCOMBED
MEMBRANE

FRENCH DRAIN

FORENCE HORIZONTAL
AND VERTICAL 1"x3"

CONCRETE SLAB –
REINFORCING PER

VAPOR BARRIER
AS REQUIRED

GRANULAR FILL
SLAB INSULATION AS
REQD' – POLYSTYRENE

BUILDBLOCK^{MD}
 SYSTÈME DE COFFRAGE ISOLANT | PRODUIT PAR STYORAIL
 INSULATING CONCRETE FORMS | MANUFACTURED BY STYORAIL
 65, ROUTE 105, LA PÊCHE, QUEBEC, J0X 3G0
 OFFICE: 819-643-4456 | TOLL FREE: 888-332-3456 | STYORAIL.CA

BASEMENT WITH 1 OR 2 STORY BUILD BLOCK ABOVE			
DATE / REV	11-17-09	SCALE	VARIES
NOTES			DETAIL SHEET
Construction shall be built in accordance with all applicable local and national building codes. All drawings are subject to change without notice.			13D MODIFIER