

NOTE:
 INSTALL APPROVED MEMBRANE WATER-
 PROOFING AT ALL SURFACES BELOW GRADE
 EXTEND 12" MIN. ABOVE FINAL GRADE

FLOOR SYSTEM PER
 CONSTRUCTION DRAWINGS _____
 CONTINUOUS LEDGER BOARD _____
 WEEP HOLES PER SECTION 703.7.6
 OF THE IRC 2003 CODE _____
 1ST FIN. FLR. ELEV. 100'-0" (DATUM)

SLOPE FINISHED GRADE
 AWAY FROM BUILDING _____
 GROUT FILL BELOW GRADE _____

6" MIN.

APPROVED JOIST HANGER _____
 MASONRY VENEER (VERIFY CODE APPROVED
 GRADE CLEARANCE FOR PROJECT LOCATION) _____
 APPROVED MEMBRANE WATER PROOFING _____
 CAST EMBEDDED STEEL ANCHOR
 BOLTS - SIZE & FREQUENCY PER
 ENGINEERING SPECIFICATIONS _____

EXTERIOR
 APPLICATIONS

FLOOR SYSTEM FOR EXTERIOR
 APPLICATION SUCH AS WOOD OR
 METAL DECKS MAY USE A SIMILAR
 ANCHORING SYSTEM TO THOSE SHOWN
 ON THIS DETAIL SHEET

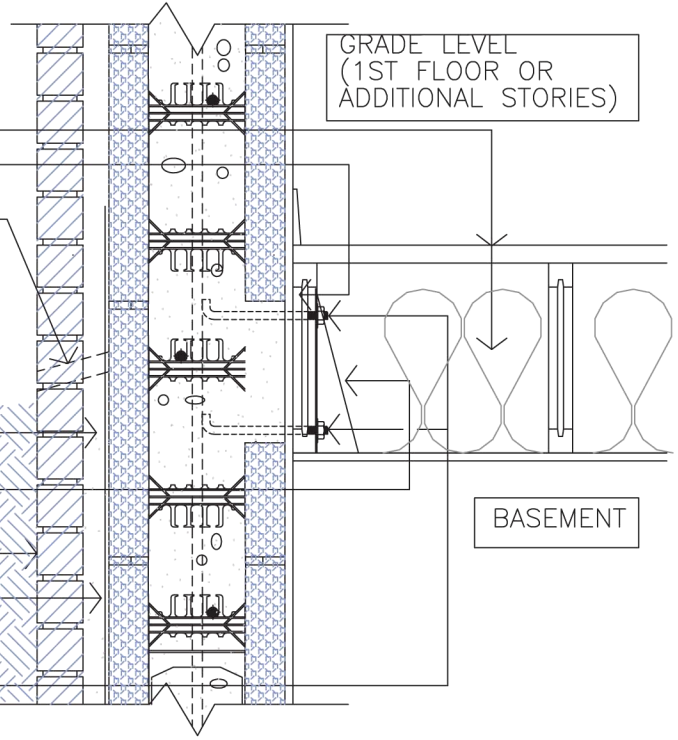
FLOOR SYSTEM PER
 CONSTRUCTION DRAWINGS _____
 CONTINUOUS LEDGER BOARD _____
 1ST FIN. FLR. ELEV. 100'-0" (DATUM)
 WEEP HOLES PER SECTION 703.7.6
 OF THE IRC 2003 CODE _____

SLOPE FINISHED GRADE
 AWAY FROM BUILDING _____
 GROUT FILL BELOW GRADE _____

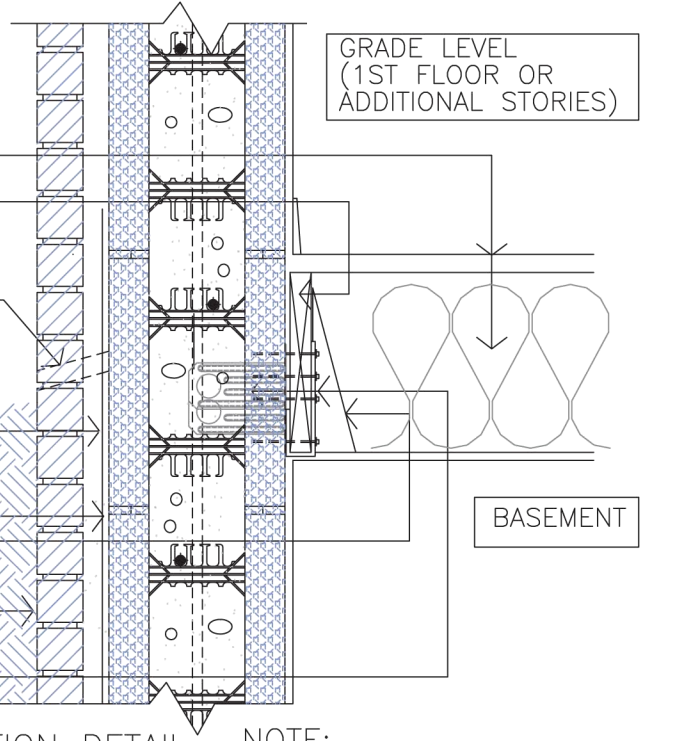
6" MIN.

APPROVED MEMBRANE WATER-
 PROOFING AT ALL SURFACES
 BELOW GRADE _____
 APPROVED JOIST HANGER _____
 MASONRY VENEER (VERIFY CODE APPROVED
 GRADE CLEARANCE FOR PROJECT LOCATION) _____
 ICF LEDGER CONNECTOR SYSTEM
 AS MFG. BY "SIMPSON STRONG-TIE INC.) _____

SEE ADDITIONAL INFORMATION
 ABOUT "SIMPSON" PRODUCTS
 ONLINE - WWW.STRONGTIE.COM
 OR CONTACT ENGINEERING
 SUPPORT @ 1-800-999-5099



2 ALTERNATE SECTION DETAIL
 14 SCALE: 1" = 1'-0"



1 SECTION DETAIL
 14 SCALE: 1" = 1'-0"

NOTE:
 DUE TO VARIATIONS IN SELECTED
 PRINTER SETTINGS, NOTED SCALES
 MAY NO LONGER BE APPLICABLE

BUILDBLOCK 6" TYPICAL FLOOR INTERSECTIONS

DATE/REV	11-17-09	SCALE	NTS	DETAIL SHEET
----------	----------	-------	-----	--------------

NOTES	<p>CONSTRUCTION SHALL BE IN ACCORDANCE WITH ALL APPLICABLE LOCAL AND NATIONAL CODES. ALL DRAWINGS ARE SUBJECT TO CHANGE WITHOUT NOTICE.</p>