

GRADE LEVEL
(1ST FLOOR OR
ADDITIONAL STORIES)

CAST EMBEDDED STEEL ANCHOR BOLTS – APPLIES TO 6" OR 8" WALLS – SIZE & FREQUENCY PER ENGINEERING SPECIFICATIONS OR SIM. TO PRESCRIPTIVE METHOD FIGURE 6.1 & 6.5 CONTAINED IN THE H.U.D. P.A.T.H. DOCUMENTATION. A LINK IS PROVIDED IN THE TECHNICAL SECTION OF OUR WEBSITE UNDER CODE COMPLIANCE

"BuildBlock"

6" I.C.F. UNITS

1ST FIN. FLR. ELEV. 100'-0" (DATUM)
(VERIFY CODE APPROVED GRADE CLEARANCE FOR PROJECT LOCATION)

6" MIN.

FLOOR SYSTEM PER
CONSTRUCTION DRAWINGS

DOWELS SUPPORTING UPPER
VERTICAL REINFORCEMENT

"BuildBlock"

8" TAPER TOP I.C.F. UNITS

APPROVED MEMBRANE
WATER PROOFING

APPROVED JOIST HANGER

15 MIN THERMAL BARRIER
OR 1/2" GYPSUM BOARD

BASEMENT

"BuildBlock"

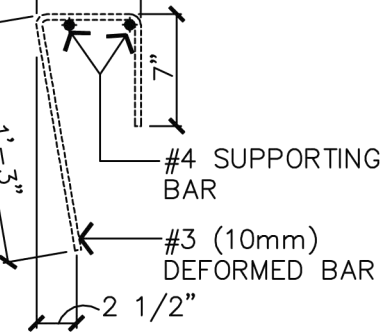
8" I.C.F. UNITS

6 1/2" RESPECTIVELY
8 1/2" FOR 6" OR 8" BLOCK

1 SECTION DETAIL
55 SCALE: 1" = 1'-0"

NOTES:

- VARIATIONS IN IMPOSED LIVE & DEAD LOADS AND OTHER APPLICATION SPECIFIC VARIABLES REQUIRE ALL ASPECTS OF THE DETAILS SHOWN HERE TO BE DESIGNED AND /OR APPROVED BY A QUALIFIED ENGINEER
- ALL CONSTRUCTION SHALL BE IN ACCORDANCE W/ THE SPECIFICATION OF AND THE RESPONSIBILITY OF A QUALIFIED STRUCTURAL ENGINEER.



2 STIRRUP DETAIL
55 SCALE: 1" = 1'-0"

MINIMUM SPACING:

- VENEER – 1000 lb/ft (15kN/m @ 18" (450mm)
- VENEER – 1500 lb/ft (22kN/m @ 12" (300mm)

NOTE:

DUE TO VARIATIONS IN SELECTED PRINTER SETTINGS, NOTED SCALES MAY NO LONGER BE APPLICABLE

BUILDBLOCK^{MD}

SYSTÈME DE COFFRAGE ISOLANT | PRODUIT PAR STYRORAIL
INSULATING CONCRETE FORMS | MANUFACTURED BY STYRORAIL
65, ROUTE 105, LA PÊCHE, QUEBEC, J0X 3G0
OFFICE: 819-643-4456 | TOLL FREE: 888-332-3456 | STYRORAIL.CA

TAPER UNIT & LEDGE CONNECTION 3

DATE/REV	09-30-07 /2	SCALE	NTS	DETAIL SHEET
NOTES				55
CONSTRUCTION SHALL BE IN ACCORDANCE WITH ALL APPLICABLE LOCAL AND NATIONAL CODES. ALL DRAWINGS ARE SUBJECT TO CHANGE WITHOUT NOTICE.				