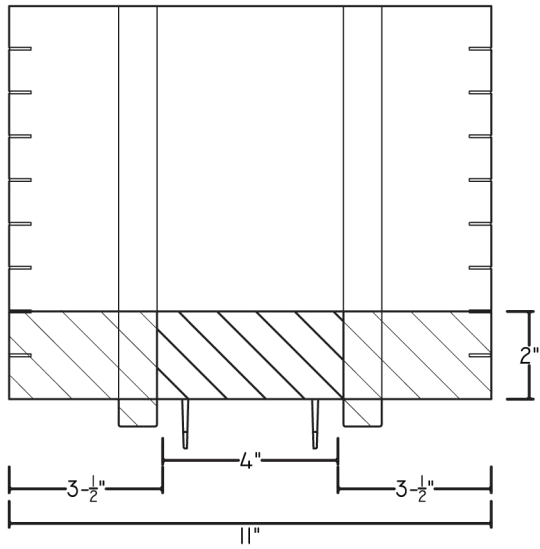
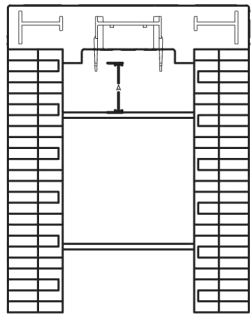


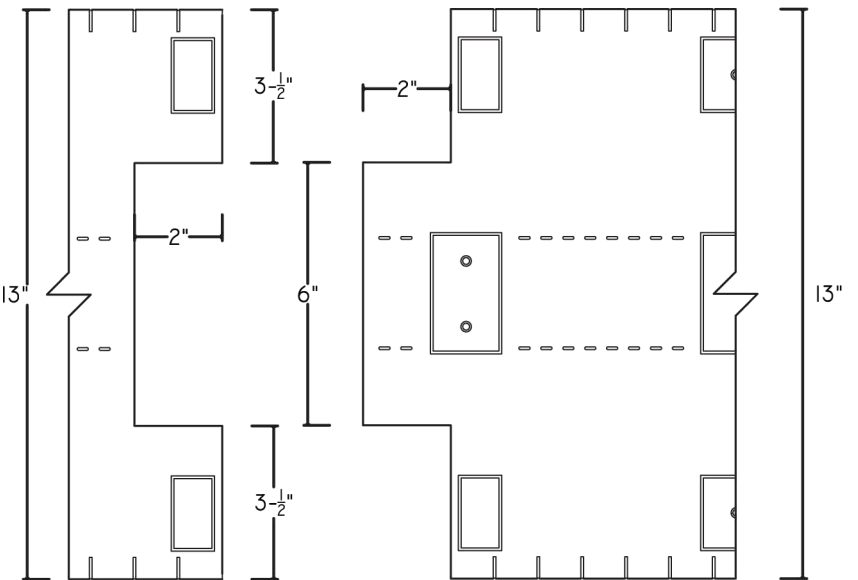
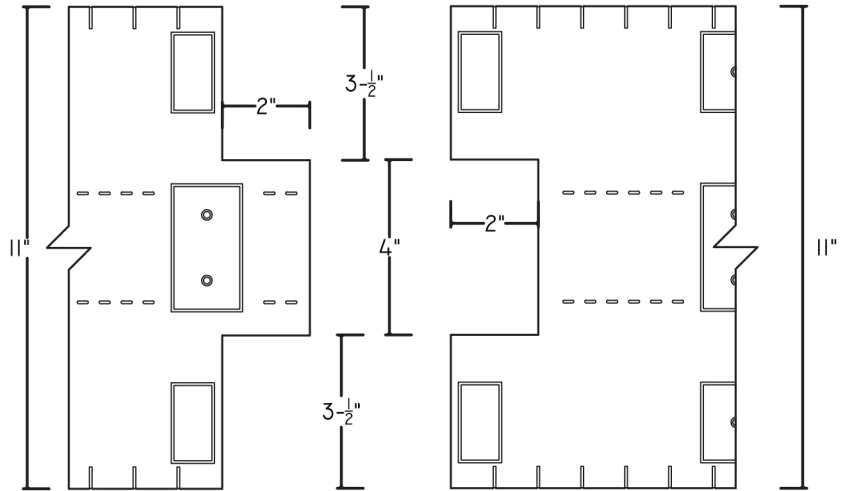
THE DIMENSIONS REPRESENTED BELOW CREATE A FACTORY CONNECTION BETWEEN BUILDBUCK PIECES. WHEN CUTTING BUILDBUCK, IT IS RECOMMENDED TO RE-CUT THE BUILDBUCK PIECES TO RECREATE THE CORRECT FACTORY END AS NEEDED.




BUILDBUCK CORNER OVERLAP WITH FACTORY EDGE.



A: WHEN BLOCK IS CUT TO MOLDED VERTICAL CUT LINES, BUILDBUCK WILL CLEAR THE CROSS TIE OF THE WEB. WHEN BLOCK IS CUT THROUGH A WEB VERTICALLY, TRIMMING OF BUILDBUCK MAY BE NECESSARY AS THE BUILDBUCK ALIGNMENT RAILS MAY TOUCH THE WEB FACE.



TOP VIEW BUILDBUCK INSTALLED

 <p>SYSTÈME DE COFFRAGE ISOLANT PRODUIT PAR STYRORAIL INSULATING CONCRETE FORMS MANUFACTURED BY STYRORAIL 65, ROUTE 105, LA PÊCHE, QUEBEC, J0X 3G0 OFFICE: 819-643-4456 TOLL FREE: 888-332-3456 STYRORAIL.CA</p>	BUILDBUCK CONNECTION DETAIL			DETAIL SHEET
	DATE/REV	12/2015	SCALE	NTS
	NOTES	CONSTRUCTION SHALL BE IN ACCORDANCE WITH ALL APPLICABLE LOCAL AND NATIONAL CODES. ALL DRAWINGS ARE SUBJECT TO CHANGE WITHOUT NOTICE.		
62E				