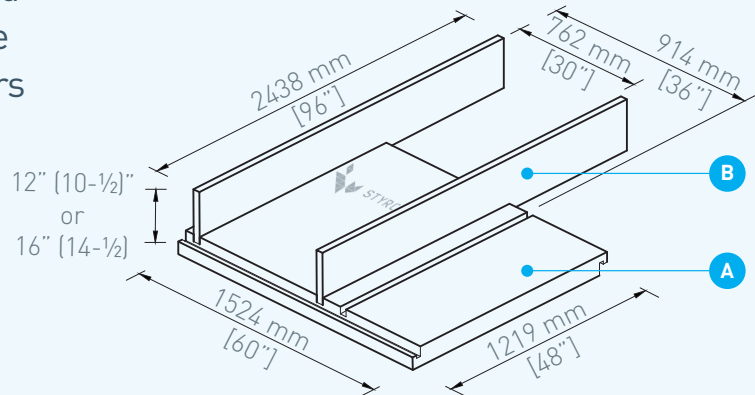


# SR.FOOTING™

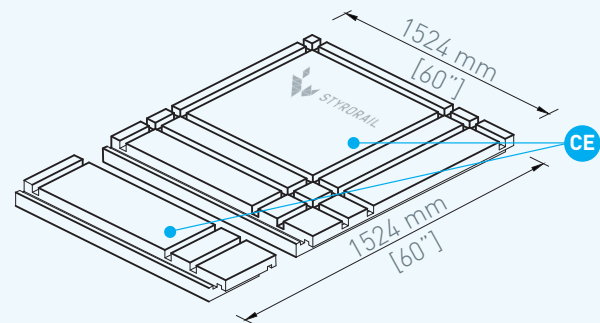
## CONTINUOUS FOOTING EXPANDED POLYSTYRENE RIGID INSULATION

The SR.Footing™ panels produced by Styro Rail Inc. are composed of type 3 expanded polystyrene [EPS] rigid insulation and offers a compressive strength of 276 kPa [40 PSI].



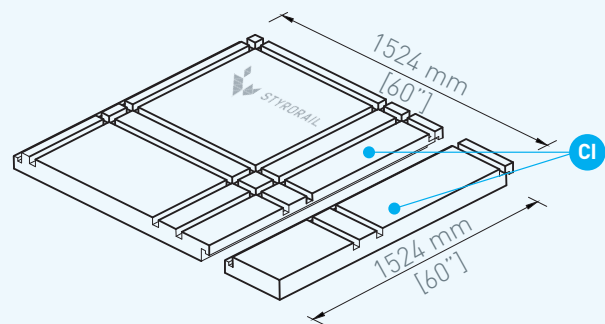
### RECOMMENDED USE

Install SR.Footing™ panels on non altered soil before pouring the footings concrete in order to limit the frost penetration. Suitable for a 762 mm [30"] or 914 mm [36"] footing. Use the 762 mm [30"] or [36"] grooves to insert the side panels SR.P200™ or to insert 64 mm [2-1/2"] thick ICF panels. Suitable for 267 mm [10-1/2"] to 368 mm [14-1/2"] thick footings. Ideal when a very high compressive strength is requested.

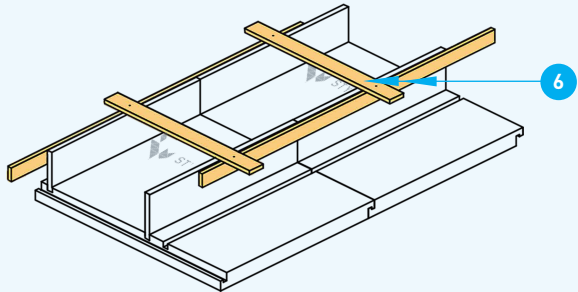
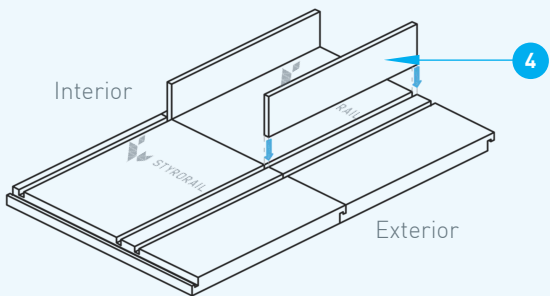
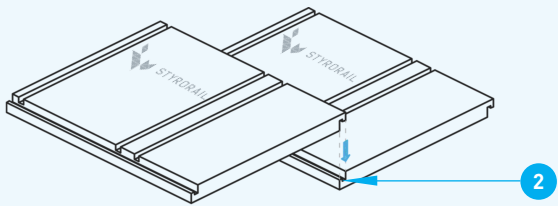
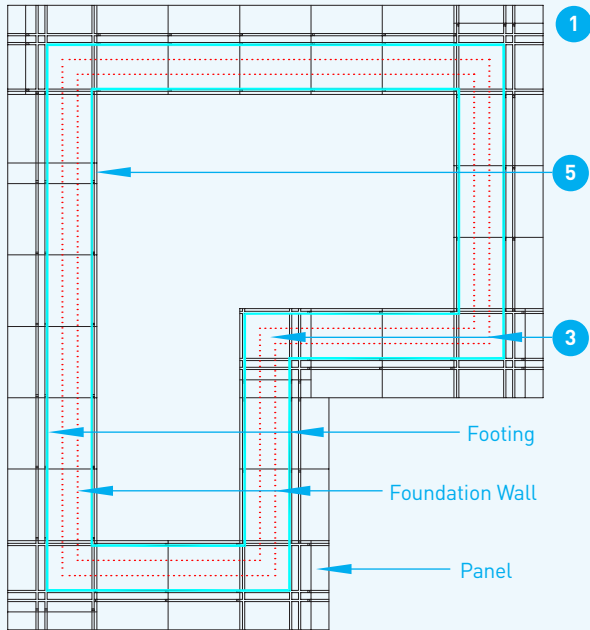


### PANEL COMPOSITION

- A** Base Panel: Type 3 (40 psi) Expanded Polystyrene Rigid Insulation [EPS] manufactured by Styro Rail™
- B** Side Panel: Type 2 (16 psi) Expanded Polystyrene Rigid Insulation [EPS] manufactured by Styro Rail™
- CE** Exterior Corner Panel: Type 3 (40 psi) Expanded Polystyrene Rigid Insulation [EPS] manufactured by Styro Rail™
- CI** Interior Corner Panel: Type 3 (40 psi) Expanded Polystyrene Rigid Insulation [EPS] manufactured by Styro Rail™

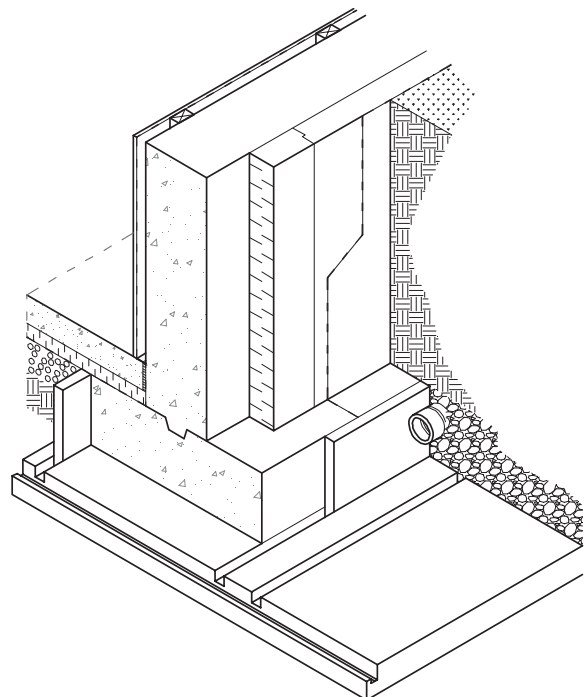


PANEL INSTALLATION

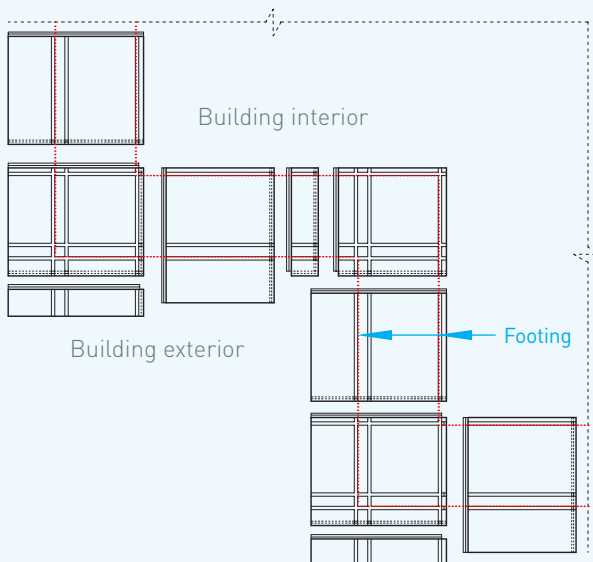
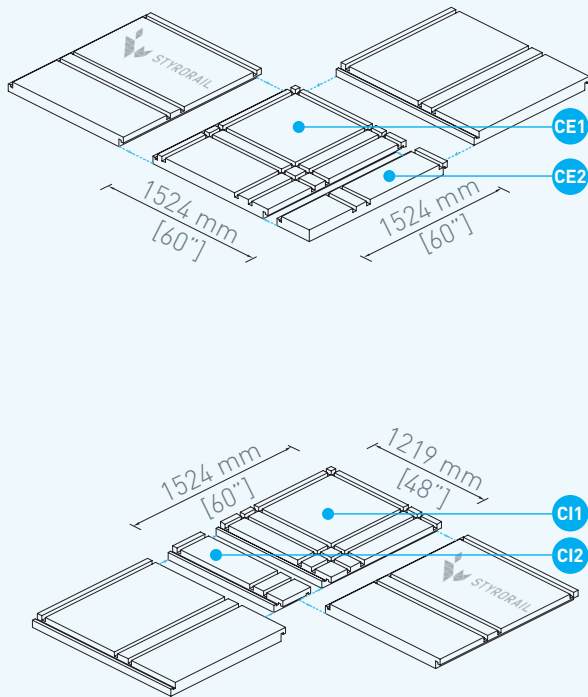


GENERAL INSTALLATION

- 1 Install the panels on unaltered soil, with the unslotted side facing outwards from the foundation.
- 2 Align the slots and fit the joints.
- 3 Use special panels for corners (CE or CI).
- 4 Insert side panels (B) into slots.  
*or*  
Install insulated formwork panels 64 mm [2-1/2"] thick. Choose the width according to the footing thickness indicated on the plans and specifications.
- 5 Cut the penultimate panel to the required width.
- 6 Before pouring the concrete, reinforce the side panels using 2" x 4" wooden slats. Refer to an engineer to determine the requirements for rebar chairs and iron rods.



### PANEL INSTALLATION



### EXTERIOR CORNER

- 1 Assemble the two corner panel parts. [CE1 and CE2].
- 2 Install as shown.

### INTERIOR CORNER

- 1 Assemble the two corner panel parts. [CI1 and CI2].
- 2 Install as shown.

# GENERAL ADVICES

---

## STORAGE AND COVERING

Store **SR.Footing™** panels in a dry and ventilated location, protected from the outside elements, ultraviolet rays, open flames or other sources of ignition. Stack panels on pallets of minimum 100 mm [4''] above the ground. If provided packaging has been damaged during shipping, cover panels with a weather and ultraviolet tarp. Panels must be dry and in good condition before installation.

To limit discoloration caused by ultraviolet rays, backfill the **SR.Footing™** panels as soon as possible.

## EXEMPTION FROM LIABILITY

The information herein is based on the present state of our best scientific and practical knowledge. They are provided to facilitate Styro Rail™ product's installation and may not apply to all situations. The user is responsible for checking the suitability of products for their intended use. Styro Rail™ installation guides are updated on a regular basis; it is the user's responsibility to obtain and to confirm the most recent version. Information contained in this data sheet may change without notice. The drawings and details herein have not been scaled up.